

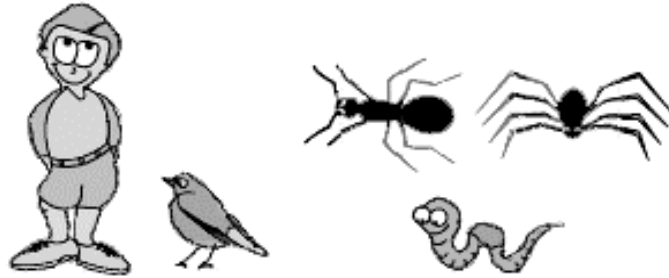
Name _____

Date _____ Period _____

What's Eating You?

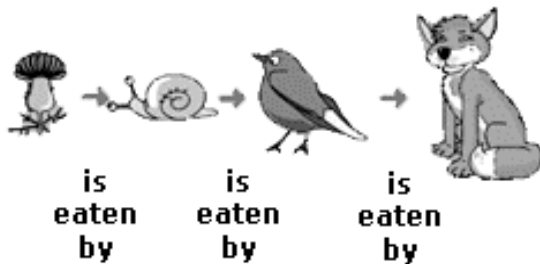
Use this key to write a code for each of these organisms.
The spider's code has already been written into the table.

Description	Number
Carnivore	1
Herbivore	2
Omnivore	3
Producer	4
Consumer	5
Predator	6
Prey	7



Organism	Food Source	Code	Organism	Food Source	Code
snail	leaves	1567	rabbit	plants	
spider	insects		wheat	photosynthesis	
robin	worms, seeds		frog	insects, worms	
honeysuckle	photosynthesis		shrew	worms	
thistle	photosynthesis		ant	aphids	
caterpillar	honeysuckle		heron	frogs	
mouse	wheat seeds		adder	mice, frogs	
badger	shrews		rat	Small animals/plants	
fox	rabbits/birds		hedgehog	insects/worms	
rose plant	photosynthesis		aphid	rose plants	
worm	rotting leaves	cat	mice, birds		
human	animals/plants				

Here is a food chain.



Using the organisms in the table:

1. Make 1 food chain at least 4 organisms long.
2. How many different food chains can you make?
3. What is the longest food chain you can make, describe it?
4. What happens when you add an omnivore to a food chain?